

# Spatial Amphibian Impact Assessment – a management tool for assessment of road effects on regional populations of Moor frogs (*Rana arvalis*)

Maj-Britt Pontoppidan<sup>1</sup>, Gösta Nachman<sup>1</sup>

<sup>1</sup> Section for Ecology and Evolution, Department of Biology, University of Copenhagen, Universitetsparken 15, DK-2100 Copenhagen, Denmark

Corresponding author: Maj-Britt Pontoppidan ([mbp@bio.ku.dk](mailto:mbp@bio.ku.dk))

---

Academic editor: D. Schmeller | Received 30 December 2012 | Accepted 25 April 2013 | Published 13 November 2013

---

**Citation:** Pontoppidan M-B, Nachman G (2013) Spatial Amphibian Impact Assessment – a management tool for assessment of road effects on regional populations of Moor frogs (*Rana arvalis*). Nature Conservation 5: 29–52. doi: 10.3897/natureconservation.5.4612

---

## Abstract

An expanding network of roads and railways fragments natural habitat affecting the amount and quality of habitat and reducing connectivity between habitat patches with severe consequences for biodiversity and population persistence. To ensure an ecologically sustainable transportation system it is essential to find agreement between nature conservation and land use. However, sustainable road planning requires adequate tools for assessment, prevention and mitigation of the impacts of infrastructure. In this study, we present a spatially explicit model, SAIA (Spatial Amphibian Impact Assessment), to be used as a standardized and quantitative tool for assessing the impact of roads on pond-breeding amphibians. The model considers a landscape mosaic of breeding habitat, summer habitat and uninhabitable land. As input, we use a GIS-map of the landscape with information on land cover as well as data on observed frog populations in the survey area. The dispersal of juvenile frogs is simulated by means of individual-based modelling, while a population-based model is used for simulating population dynamics. In combination the two types of models generate output on landscape connectivity and population viability. Analyses of maps without the planned road constructions will constitute a “null-model” against which other scenarios can be compared, making it possible to assess the effect of road projects on landscape connectivity and population dynamics. Analyses and comparisons of several alternative road projects can identify the least harmful solution. The effect of mitigation measures, such as new breeding ponds and underpasses, can be evaluated by incorporating them in the maps, thereby enhancing the utility of the model as a management tool in Environmental Impact Assessments. We demonstrate how SAIA can be used to assess which management measures would be best to mitigate the effect of landscape fragmentation caused by road constructions by means of a case study dedicated to the Moor frog (*Rana arvalis*).

**Keywords**

*Rana arvalis*, Individual-based modelling, Fragmentation, Connectivity, Pond-breeding amphibians, Landscape planning, mitigation, management tool, population persistence

**Introduction**

Over the last decade a growing amount of literature has documented the severe impacts of transport infrastructure on biodiversity, population persistence and gene flow. An expanding network of roads and railways divides natural habitat into smaller and smaller fragments, affecting the amount and quality of habitat and reducing connectivity between habitat patches (Coffin 2007; Fahrig and Rytwinski 2009; Forman and Alexander 1998; Holderegger and Di Giulio 2010; Spellerberg 1998; Trombulak and Frissell 2000). To ensure an ecologically sustainable transportation system, it is essential to find agreement between nature conservation and land use. In Europe and the US, programs and policies have been developed to address this need in strategic and environmental impact assessments (Brown 2006; Iuell et al. 2003; Trocmé et al. 2003). However, sustainable road planning requires adequate tools for assessment, prevention and mitigation of the impacts of infrastructure (Beckmann 2010; Forman et al. 2003; Gontier et al. 2010).

Movement is vital to the survival of animal populations. The persistence of a population depends on the amount and accessibility of its required resources and, within a metapopulation framework, also on sufficient dispersal between subpopulations (Dunning et al. 1992; Wiens 1997). Taylor et al. (1993) defined connectivity as the degree to which the landscape facilitates or impedes movement among resource patches” and measures of connectivity are often used as indicators of a landscape’s capability to sustain a population. However, habitat requirements and behaviours differ between animal species and, thus, the connectivity of a landscape must in essence be species specific. Geographical information systems (GIS) have proved to be an important tool when assessing the impact of roads on landscape fragmentation and/or connectivity (Beckmann 2010; Brown 2006; Calabrese and Fagan 2004). Methods using least cost modelling (Adriaensen et al. 2003; Epps et al. 2007) or graph theoretical approaches (Bunn et al. 2000; Minor and Urban 2008; Zetterberg et al. 2010) usually combine GIS data with some species specific data such as dispersal distances or habitat suitability. However, none of these methods considers the particular dispersal, survival and establishment of the animals, which depend not only on the quality of the habitat but also on the behaviour of the animals, their responses to habitat conditions, landscape elements, interactions with other animals and many other factors. Individual based models (IBMs) have proved to be suitable for describing such processes (Grimm 1999; McLane et al. 2011) and recently there has been an increase in IBM case studies demonstrating the potential for analysing population dynamics emerging from the interactions between landscape settings and animal behaviour (e.g. Graf et al. 2007; Kramer-Schadt et al. 2004; Pe’er et al. 2011).

We have developed a strategic management tool to be used in assessment and mitigation of road effects on a regional population of pond-breeding amphibians. The model, called SAIA (Spatial Amphibian Impact Assessment), combines the use of GIS land cover maps with IBM and provides information on connectivity as well as estimates of population persistence. SAIA is to be used by the Danish road authorities when assessing how new road constructions may affect Moor frogs (*Rana arvalis*). In this paper we demonstrate how SAIA can be used for assessing which management measures would be best to mitigate the effect of landscape fragmentation caused by the construction of a road ca 90 km west of Copenhagen, Denmark. To achieve this goal the following specific research questions were addressed:

1. What is the structure of the regional habitat network before road construction?
2. How is the habitat network affected by the new road?
3. Which mitigation strategies are best suited to preserve the overall persistence of the regional population of Moor frogs?

## **Methods**

SAIA combines an individual based model with a population based model. The individual based model provides estimates of landscape connectivity and immigration probabilities between all pair wise ponds. The population based model provides estimates of population size and persistence probability.

We use the terms dispersal and migration as defined by Semlitsch (2008), i.e. dispersal is *interpopulational, unidirectional movements from natal sites to other breeding sites* and migration is *intrapopulational, round-trip movements toward and away from aquatic breeding sites*. The habitat of pond breeding amphibians, such as the Moor frog, includes terrestrial as well as aquatic habitat. Therefore, we define an adequate habitat patch of a subpopulation as containing not only the breeding pond but also all accessible summer habitat within migration distance from the pond (Dunning et al. 1992; Pope et al. 2000).

## **Model species**

Moor frogs spend most of their life in terrestrial habitat; aquatic habitat is only used during the breeding season in early spring (Elmberg 2008; Glandt 2008; Hartung 1991). Soon after breeding, the frogs return to their summer habitat, which lies mostly within a 400 m radius from the breeding pond (Elmberg 2008; Hartung 1991; Kovar et al. 2009). Adult frogs show strong site fidelity and often use the same breeding pond and summer habitat from year to year (Loman 1994). Long distance dispersal takes place predominantly during the juvenile life-stage (Semlitsch 2008; Sinsch 1990; 2006). Shortly after metamorphosis, the young frogs leave the natal pond and disperse into the surrounding landscape seeking suitable summer habitat. Dispersal distances

**Table 1.** List of variables characterizing the agents in SAIA.

Variable	Notation	Value range	Agent type	Description
Area Value	$W$	0.5; 1	Cell	Effective area of the cell
Daily Survival	$D_i$		Cell	Daily survival probability
Frog Density	$D$		Cell	Mean number of frogs in the cell
Habitat Attraction	$H_a$	1-5	Cell	The cell's relative attraction to frogs during movement
Habitat Code	$H_c$		Cell	The land cover category of the cell
Habitat Survival	$H_s$	1-5	Cell	The cell's relative survival index
Summer Quality	$H_q$	1-5	Cell	The cell's relative suitability as summer habitat
Breeding Pond			Frog	Breeding pond of frog agents
Natal Pond			Frog	Natal pond of frog agents
Pond ID			Pond	ID number
Pond Perimeter	$O$		Pond	Perimeter of the pond
Pond Quality	$Q$	0.1-1	Pond	Quality index of the pond
Population Size	$N_o$		Pond	Number of adult females (estimated as egg masses found in the pond during survey)
Summer Habitat	$A$		Pond	Summer habitat cells associated with the pond
Summer Habitat Area	$A'$		Pond	Effective area of associated summer habitat

are between a few hundred meters up to 1–2 kilometres (Baker and Halliday 1999; Hartung 1991; Sinsch 2006; Vos and Chardon 1998). The juveniles stay in terrestrial habitat 2–3 years until they reach maturity, although some observations indicate that juvenile frogs follow the adults during the spring migration, without entering the breeding ponds (Hartung 1991; Sjögren-Gulve 1998).

## Model overview

Full model description following the protocol suggested by Grimm et al. (2006, 2010) and model parameterisation are provided in Appendix. Table 1 shows a full list of model variables while a list of model parameters can be found in Table A3 in the Appendix. Netlogo v.4.1.3 (Wilensky 1999) was used as modelling environment (freely downloadable at <http://ccl.northwestern.edu/netlogo>).

## Map construction

To construct a model landscape in which our virtual frogs can move we use a GIS raster map of the study area with land cover data. Each raster cell contains information about the cell's land cover or habitat type ( $H_c$ ). Moreover, three variables are associated with each category of land cover/habitat (Table 2):  $H_q$ , the category's relative suitability as summer habitat;  $H_a$ , the category's relative attraction to frogs during movement and  $H_s$ , the category's relative survival index. For each cell, the assigned survival index is

**Table 2.** Land cover categories and the associated values of Habitat Survival, Habitat Attraction and Summer Quality.

Habitat Code ( $H_i$ )	Description	Habitat Attraction ( $H_a$ )	Habitat Survival ( $H_s$ )	Summer Quality ( $H_q$ )
2	4-lane motorway	2	N/A	1
3	2-lane motorway	2	N/A	1
4	Road, width > 6m	3	N/A	1
5	Road, width 3-6 m	3	N/A	1
6	Other roads	3	2	2
8	Pathway	4	4	3
10	Multiple surface	3	3	3
11	Railway	4	2	3
12	Building	1	N/A	N/A
15	Other made surface	2	3	2
18	Wetlands	5	5	5
20	Running water	4	4	3
22	Meadows	5	5	5
24	Grassland	4	4	4
25	Lakes	1	N/A	N/A
28	Hedgerow	4	4	4
29	Heath land	5	5	4
32	Woodland	4	4	4
34	Stand of trees	4	4	3
36	Bare surface	2	2	1
40	Fallow land	4	4	4
42	Field crops	2	2	2
50	Drift fence	1	N/A	N/A
60	Underpass	4	4	1

converted into a daily survival probability ( $D_s$ ). When concerning paved roads, the daily survival probabilities ranges between 0.1 and 0.8 depending on road category; all other land cover/habitat categories are assigned values between 0.9820 and 0.9995 (see Appendix in the supplementary material for details). Cells with structures or habitats which are assumed inaccessible to the frogs (e.g. buildings, fences or large water bodies) are given a habitat attraction of 1. This will prevent the frogs from entering the cell.

A point-data set containing information about potential breeding ponds found in the study area is used to create stationary pond agents. Each pond agent is characterized by an ID number, the perimeter of the pond ( $O$ ), initial population size (adult females) ( $N_o$ ) and a quality index ( $Q$ ) indicating the suitability of the pond and the immediate surroundings (20 m) in regard to egg and larval survival. In addition the pond variable  $A$  is updated with a list of summer habitat cells within migration distance. Summer habitat cells are identified as cells with SummerQuality ( $H_q$ ) > 3. Summer habitat cells can be completely surrounded by other summer habitat cells (core cells)

or have one or more neighbouring cells which are not summer habitat (edge cells). To account for edge effects, core cells are given an area value ( $W$ ) of 1 while  $W$  is 0.5 for edge cells (Watts and Handley 2010) and the effective area of the summer habitat ( $A'$ ) is found as the sum of  $W$ -values of the summer habitat cells belonging to the pond. The individual based model only uses information about pond ID, quality, and summer habitat while all of the variables enter into the population based model.

### Individual based model

The IBM is largely identical to the model described in Pontoppidan and Nachman (2013). The model simulates the dispersal of juvenile frogs and estimates immigration probabilities between ponds. Immigration requires two events: 1) the successful dispersal of a juvenile frog to summer habitat outside its natal habitat patch and 2) subsequent successful migration from the new summer habitat to a nearby breeding pond. In real life dispersal starts just after metamorphosis in early summer and lasts until hibernation in autumn. The second part of the immigration event, migration, takes place in the spring 2.5 years later. For simplicity, we simulate the dispersal and breeding migration, as if they take place in the same year.

At the start of a simulation, 250 frog agents are created at each pond. The frogs then disperse through the landscape in random directions from the ponds until they find suitable summer habitat; the movement of the frogs depends on the attractiveness of neighbouring cells and the cells' suitability as summer habitat. Survival probabilities depend on the traversed habitat types. Unlike the former model, movement behaviour in SAIA also depends on weather conditions. A database containing data on daily precipitation (Cappelen 2009) is used to reflect natural weather patterns. At the start of a simulation, a random year is chosen from this database and at each time step, information on precipitation is drawn for the simulated day of the year. When daily precipitation exceeds a given threshold ( $a$ ), the variables *HabitatAttraction* and *DailySurvival* of all accessible cells are given the highest value. An exception is paved roads where only *HabitatAttraction*, but not *DailySurvival*, is changed. The simulation runs for 240 time steps, each time step representing one day. After each simulation, immigration probabilities between all pairs of ponds are calculated and an immigration matrix is constructed.

### Population based model

After the individual based simulation, a population based model simulates the population dynamics in each pond through 40 iterations of a life cycle model. The elements of the life cycle model are 1) Reproduction, 2) Survival and 3) Immigration. For simplicity, we only model the female part of the population. We assume a sex ratio of 1:1 and that females always become mated once in a season. Pond populations are grouped by age from 0 through 6 years, and survival and reproductive rates are based on life-table

**Table 3.** Life table for *Rana arvalis* constructed by amphibian experts.

Stage/Age	Survival probability	Fecundity ( eggs pr. female)
Egg/larvae	0.005	-
0	0.55	0
1	0.55	70
2	0.55	945
3	0.55	1190
4	0.50	1250
5	0.40	1300
6	0.20	1300

data constructed by amphibian experts (Fog and Hesselsøe 2009) (Table 3). The pond variable ( $N_0$ ) is set as the initial population size of the pond. Demographic but not environmental stochasticity is incorporated into the model.

Individuals can start reproducing in their third year. As in Hels and Nachman (2002), the expected egg production of a female is assumed to follow a negative binomial distribution with mean  $\bar{R}$  and clumping parameter  $k$ .  $\bar{R}$  is the mean number of eggs produced by a female of a given age. The number of two-weeks old frogs ready to disperse is considered as the reproductive output. This involves the survival of egg and larvae, as well as the survival of the young frogs the first two-weeks after metamorphosis. The overall probability that an egg develops into a frog that survives until dispersal time is assumed to be negatively affected by the density of eggs in the pond and positively affected by the quality of the pond. The conditional probability that a frog survives from age  $a$  to age  $a+1$  is assumed to depend on age. Furthermore, survival is assumed to depend on the frog density in the summer habitat. For simplicity, this is modelled as a “culling” process when frog density exceeds the carrying capacity of summer habitat. The carrying capacity is estimated as the mean initial frog density in summer habitat cells associated with the populated ponds. Immigration probabilities between all pairs of ponds are obtained from the immigration matrix constructed during the IBM. The actual number of immigrants a subpopulation receives depends on the reproductive output of each of the other ponds and the corresponding immigration probability. Emigration rates are not modelled explicitly.

## Output

At the end of the individual based simulation, the following output was recorded:

the number of surviving frogs, the natal and breeding ponds of all frogs, and the immigration probabilities ( $p_{ij}$ ) between all pair-wise ponds. Landscape connectivity ( $S$ ) is found as

$$S = \sum_{i=1}^n \sum_{j=1}^n p_{ij}, \quad (i \neq j) \quad (\text{eq. 1})$$

At the end of the population based simulation, the estimated population size of each pond is recorded as the resulting numbers of frogs of ages 2 through 6. The model was run 50 times and mean connectivity with 95% confidence intervals (CI) was computed. For each pond, we computed mean population size with 95% confidence intervals (CI). Pond persistence probability was computed as the proportion of replicates where the estimated population size was positive. The regional population size was computed as the sum of all ponds. Mean number of populated ponds with 95% CI was also calculated. SAIA's connectivity measure is an index of the potential connectivity between all ponds, whether they are populated or not. The population based model links the potential connectivity with local population dynamics, and estimated abundances and persistence probabilities can be regarded as a result of the realised connectivity. The estimated landscape connectivity and population size are considered measures of the landscape's ecological performance in regard to the modelled species.

Cluster analysis was used to identify highly connected groups of ponds. Ponds were grouped into clusters depending on their mutual connectivity, using unweighted, arithmetic, average clustering as described by Legendre and Legendre (1998). Since immigration probabilities between ponds are not necessarily symmetric, i.e.  $p_{ij} \neq p_{ji}$ , we used summed immigrations probabilities as similarity measures ( $m$ ), i.e.  $m_{ij} = p_{ij} + p_{ji}$ . The threshold at which a given pond or cluster no longer can be added to another cluster was set to  $m_{ij} \leq 0.01$ . Connectivity between any pairs of clusters ( $S_{k,l}$ ) is found as

$$S_{k,l} = \sum_{i=1}^{n_k} \sum_{j=1}^{n_l} p_{ij}, \quad (i \neq j) \quad (\text{eq. 2})$$

where  $n_k$  and  $n_l$  are the number of ponds in clusters  $k$  and  $l$ , respectively. Cluster abundance is computed as the sum of the member ponds' estimated population size.

## Model validation

We have applied a bottom-up approach and used pattern oriented modelling (Grimm and Railsback 2005; Latombe et al. 2011) to parameterise and calibrate SAIA's sub-models controlling movement, dispersal and survival. This is documented in detail in Appendix in the supplementary material. However, lack of field data and the specificity of the model's emergent results to the modelled system complicate validation of the full model. Instead, we have used a heuristic approach, consulting amphibian experts during the whole modelling process to evaluate the plausibility of the emergent results. The population based model is based on expert data but is not validated against field data. Moreover, environmental stochasticity is not included in the population based model. Hence, the output should not be considered predictive, but rather as an index of the landscape's potential carrying capacity.



## **Case study**

We apply SAIA to a road project in Denmark and demonstrate the workflow of an impact assessment. The project concerns an area in the north-western part of Zealand, 10 km east of the city of Kalundborg (55°40.14'N, 11°17.85'E) (Figure 1) and includes a broadening of an existing 2-lane motorway into a 4-lane motorway as well as an extension of the motorway. The assessment procedure can be divided into three parts – Initial analyses, Mitigation planning and Mitigation analysis.

## **Initial analyses**

This part involves the construction and analysis of two maps. The first map, Scenario 0, is a map of the landscape as it looks before the planned road project. This map serves as Null Scenario and the results of the analysis are considered the state of the landscape we wish to maintain. The second map, Scenario 1, is of the landscape as expected after road construction. Analysis of this map gives indications of the effects the planned road construction can have on the ecological performance of the landscape.

## **Scenario 0**

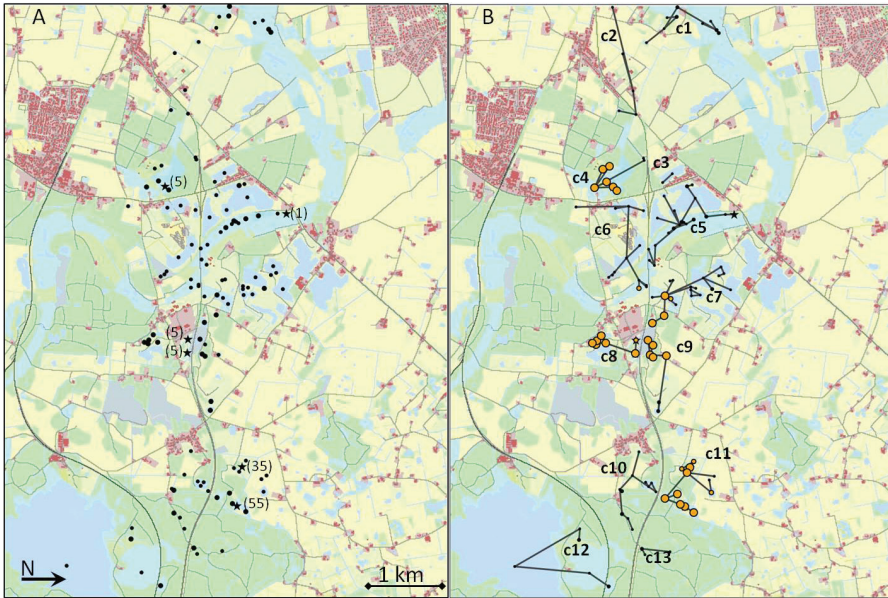
Construction of the map is based on a GIS data set from the road project, supplied by the Danish Road Directorate and an environmental consultancy firm, Amphi Consult. The extent of the land cover map is  $600 \times 800$  cells, and each cell is  $10 \times 10$  m. All cells are assigned values of  $H_a$ ,  $H_s$  and  $H_q$  depending on their land cover type, following a protocol designed by Amphi Consult (Hassingboe et al. 2012) (Table 2). A point data set contains information about potential breeding ponds found during a field survey of the area. The survey was conducted in spring 2012 by Amphi Consult in the initial phases of the road project following standard procedures (Fog and Hesselsøe 2009). The initial population ( $N_0$ ) was estimated as the number of egg masses found in the surveyed pond and is assumed to equal the number of breeding females in the pond. Pond quality ( $Q$ ) was assessed visually and includes factors such as the shape of the pond, degree of shading, vegetation in as well as around the pond and presence of predators (fish). The data set contains 121 ponds, of which 23 ponds are of high quality ( $Q > 0.6$ ). Six of the ponds are populated; population sizes ranging between 1 and 55 egg masses, in total 106 egg masses. The map with the location of the ponds is shown in Figure 2A, ponds containing egg masses are marked with a star shape and the number of egg masses found.



**Figure 1.** Location of two study areas in Denmark. KaB is an area near Kalundborg on Zealand and HoB is near Holstebro in Jutland. Only KaB is used in the present analysis, but both areas are used for the parameterisation of the model.

### Scenario 1

The map used in Scenario 0 is modified by changing the land cover category of the existing road section from a 2-lane motorway to a 4-lane motorway. The new section of the road is added as well and categorised as a 4-lane motorway (Figure 3A). As a consequence of the change in land cover category the daily survival probability ( $D_j$ ) of the road cells decreases from 0.20 to 0.10 (Table A5 in the Appendix). The road construction also involves removal of five unpopulated ponds along the road (Figure 3A).



**Figure 2.** Scenario 0. **A** Map of the landscape before road constructions. Black dots represent potential breeding ponds. Small dots are ponds with pond quality ( $Q$ )  $\leq 6$ ; large dots are ponds with  $Q \geq 7$ . Populated ponds are indicated with a star shape. The number of egg masses found in the pond is shown in parenthesis. **B** Result of cluster analysis showing clusters c1–c13. Ponds linked with black lines belong to the same cluster. Pond size and colour indicate the result of the population based model. Yellow circles represent ponds with an estimated population size  $\geq 1$ . Ponds with larger yellow circles have a persistence probability  $> 0.75$ .

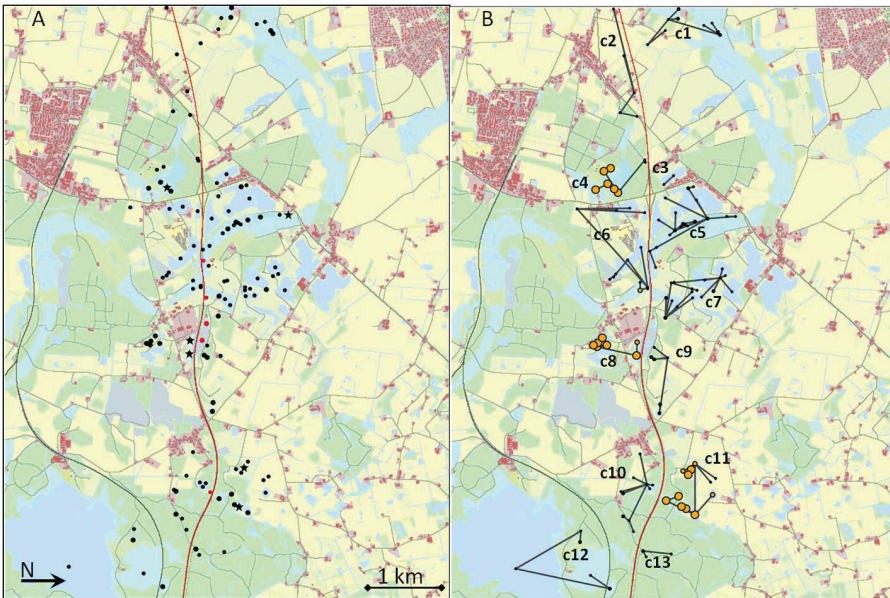
## Mitigation planning

Once the analyses of Scenario 0 and Scenario 1 are done, planning of possible mitigation measures can start. The results from the initial analyses can give insights in the structure of the pond network and can locate areas or subpopulation where the road construction will have the strongest impact. Likely source populations and their colonisation potential may be identified and possible sink population may be recognised. Interpretation of the results provides a basis for considerations about which mitigation measures are needed and where to place them. A series of scenarios with different suggestions for mitigation measures can then be constructed and analysed.

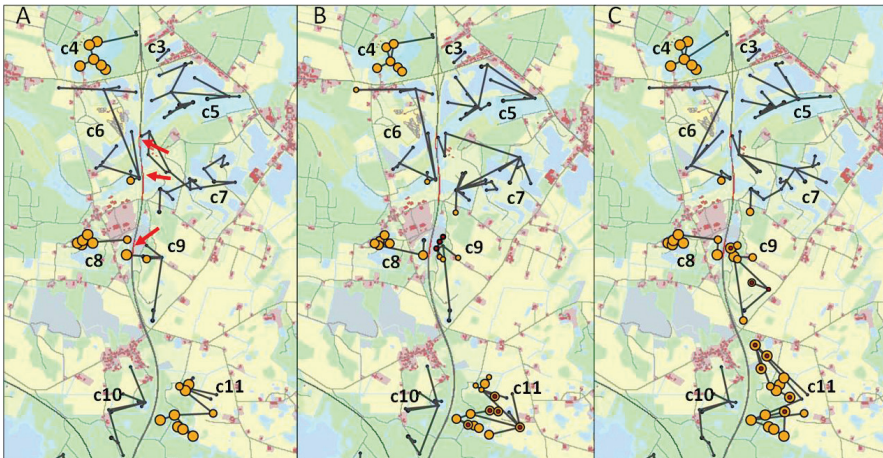
## Mitigation analysis

In this case study we construct and analyse three alternative mitigation scenarios - Scenario 2, Scenario 3a and Scenario 3b. The choices of mitigation measures depend as just mentioned on the results of the initial analysis. Thus, the reasoning behind the different mitigation scenarios will be explained in the result section. However, the map construction of the three scenarios is briefly described below.





**Figure 3.** Scenario 1. **A** Map of the landscape after road constructions (red road). Black dots represent potential breeding ponds. Small dots are ponds with pond quality ( $Q$ )  $\leq 6$ ; large dots are ponds with  $Q \geq 7$ . Populated ponds are indicated with a star shape. Pink ponds are ponds removed in connection with the constructions **B** Result of cluster analysis showing clusters c1–c13. Ponds linked with black lines belong to the same cluster. Pond size and colour indicate the result of the population based model. Yellow circles represent ponds with an estimated population size  $\geq 1$ . Ponds with larger yellow circles have a persistence probability  $> 0.75$ .



**Figure 4.** Analyses of mitigation measures. Result of cluster analyses showing clusters c3–c11. Ponds linked with black lines belong to the same cluster. Pond size and colour indicate the result of the population based model. Yellow circles represent populated ponds. Ponds with larger yellow circles have a persistence probability  $> 0.75$ . **A** Scenario 2 - Location of underpasses is shown with red arrows **B** Scenario 3a - Three new ponds in cluster c9 and five new ponds in c11 are shown with red dots **C** Scenario 3b - Eight new ponds connecting c9 and c11 are shown with red dots.

## Scenario 2: Construction of underpasses and drift fences

In this scenario we add three underpasses to the map used in Scenario 1. Drift fences are established along the road for 100 m on each side of the underpass, except for underpass 2 which has a 300 m drift fence to the east. The location of the underpasses is shown in Figure 4A. Underpasses are constructed by changing the habitat code and the associated values of habitat attraction ( $H_a$ ) and daily survival probability ( $D_j$ ) of the affected road cells. Drift fences are created by changing the habitat attraction of the affected road section to 1, thus preventing access to the cells.

## Scenario 3a and 3b: Construction of artificial breeding ponds

In these two scenarios eight artificial, high quality breeding ponds are added to the map used in Scenario 1. Scenario 3a and 3b represent two alternative locations of the eight ponds (Figure 4B and C). Each breeding pond is created as a pond agent and assigned a pond quality ( $Q$ ) of 0.7. The initial population size ( $N_o$ ) is set to 0. The pond perimeter ( $O$ ) is set to 79 m, corresponding to the average size of a standard artificial breeding pond.

## Results

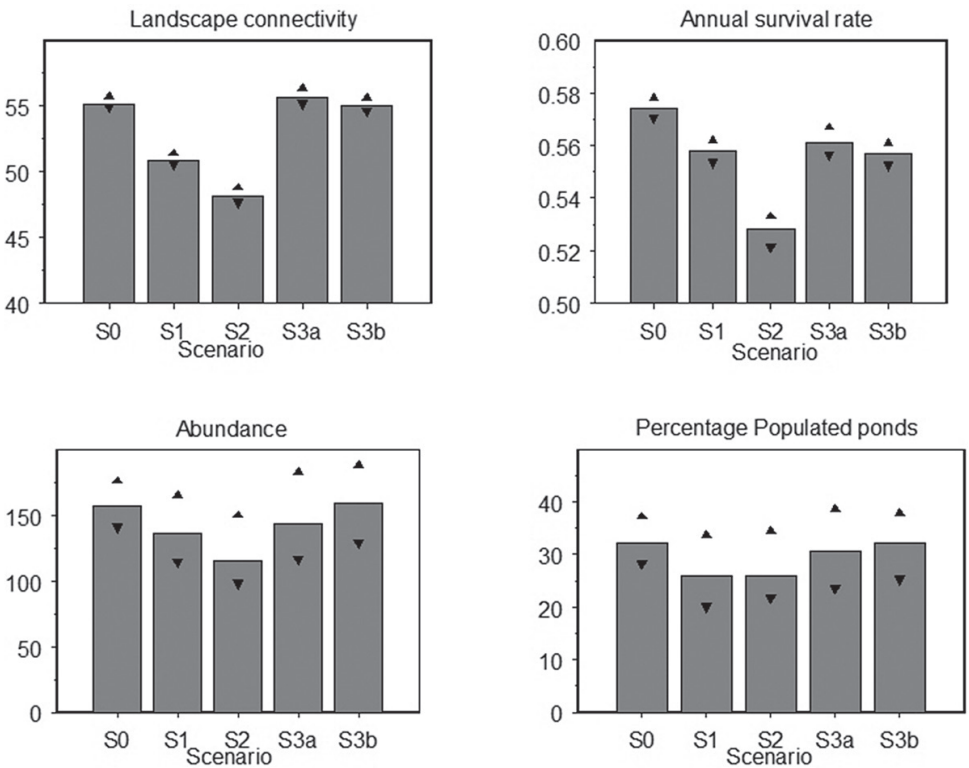
### Initial analyses

#### Scenario 0

The average percentage of ponds populated during a simulation is 32%, although only 22% of the ponds have a more permanent status (pond persistence probability > 0.75). The regional abundance of adult female frogs is estimated to be 157; the percentage of frogs surviving during dispersal is 57 %, and landscape connectivity is 55 (Figure 5). The cluster analysis groups the 121 ponds into 13 clusters, cluster sizes ranging from 2-20 ponds (Figure 2B, Table 4). The six populated ponds found during field surveys are distributed on four different clusters. One pond with only one adult female is found in cluster c5. Another pond, with an initial population of five, belongs to cluster c4 and two other ponds, also with a  $N_o$  of five, are found in cluster c8. Cluster c11 contains the remaining two populated ponds with an initial total population of 90 adult females. Apart from cluster c5, all of these initially populated clusters exhibit high viability. Clusters c4, c8 and c11 have mean pond persistence probabilities between 77% - 93% and estimated cluster abundances from 23–51 adult females. Cluster c9 also shows high values of abundance and persistence. Although initially unpopulated, c9 contains several high quality ponds and is connected with c8 and c11 which may promote colonisation and establishment. In cluster c6 and c7, the mean

**Table 4.** Results from analysis of Scenario 0 (before road construction).

Cluster ID	c1	c2	c3	c4	c5	c6	c7	c8	c9	c10	c11	c12	c13
Number of ponds in cluster	9	5	2	8	20	13	19	7	7	11	12	5	3
Number of high quality ponds ( $Q > 0.6$ )	2	0	0	4	2	0	1	7	3	0	3	1	0
Connectivity to other clusters	0.45	0.54	0.30	0.57	2.19	1.13	2.94	0.36	1.20	0.07	0.10	0.05	0.06
Estimated cluster abundance	0	0	0	49	0	3	11	23	14	0	51	0	0
Mean pond persistence probability	0	0	0	0.82	0.03	0.29	0.35	0.93	0.73	0.01	0.77	0	0.13
Connectivity to c4	0	0.09	0.04	-	0.01	0.44	0	0	0	0	0	0	0
Connectivity to c8	0	0	0	0	0	0.23	0.04	-	0.10	0	0	0	0
Connectivity to c11	0	0	0	0	0	0.00	0	0	0.02	0.02	-	0	0.06



**Figure 5.** Key results from analysis of the five scenarios. Upper and lower 95% confidence limits are indicated with black triangles.

pond persistence probability is considerably lower (29–35%) as is the estimated cluster abundance. While the two clusters, especially c6, are connected with other populated clusters, they lack high-quality ponds and the clusters may function as sinks. In the remaining clusters the estimated abundance is less than one individual.

### **Scenario 1**

After construction of the road, the percentage of populated ponds is reduced to 26% and the number of ponds with a persistence probability > 0.75 is now down to 16%. Survival rate of dispersing frogs is 56% and estimated regional abundance is 136 adult females. Landscape connectivity decreases to 51 (Figure 5). The number of clusters is unchanged but connectivity between clusters is reduced (Table 5). Connectivity from c7 and c9 to their primary source (c8) decreases more than 80%. Moreover, three ponds are lost in c7 and c9 due to the road construction. Estimated abundance and mean pond persistence probability decreases in c7 and c9 and these clusters are no longer able to uphold viable populations (Figure 3B). However, the initially populated clusters c4, c8 and c11 are not affected by the road construction.

### **Mitigation planning**

The initial analyses reveal that the landscape contains three viable populations (c4, c8 & c11) centred on the initially populated ponds. These populations appear not to be affected by the road construction and in the simulations the clusters seem to function as sources enabling colonisation and establishment of populations in c9 and c7. Cluster c4 has a large and viable population, but even though it is well connected with the neighbouring clusters their qualities are not high enough to enable establishment of new populations. Since c4 is not connected with c7 and c9, its potential as source cluster is low. Cluster c8 seems to be the primary source cluster to c9 and c7; however, expansion of the road heavily reduces its value as a source. Furthermore, the removal of three ponds between c9 and c7 may diminish the connectivity between these clusters. Cluster c11 has a viable population and although situated somewhat remotely there is still some connectivity to c7 and c9.

The results indicate that, in order to compensate or mitigate the effect of the road project, the best strategies will be either to re-establish connectivity across the road between cluster c8 and clusters c7/c9 and between cluster c7 and c9 or to take advantage of the viability of cluster c11 and its source potential. Based on this, we create and analyse the following scenarios:

*Scenario 2:* Connectivity across the road is re-established by constructing three underpasses and drift fences along the middle section of the motorway (Figure 4A). Two of the underpasses (including drift fences) were placed between cluster c6 and c7; the

**Table 5.** Results from analysis of Scenario 1 (after road construction).

Cluster ID	c1	c2	c3	c4	c5	c6	c7	c8	c9	c10	c11	c12	c13
Number of ponds in cluster	9	5	2	8	19	13	17	7	6	9	12	5	3
Number of high quality ponds (Q > 0.6)	2	0	0	4	2	0	1	7	2	0	3	1	0
Connectivity to other clusters	0.02	0.10	0.27	0.52	1.69	0.67	1.92	0.23	0.55	0.06	0.09	0.05	0.06
Estimated cluster abundance	0	0	0	50	2	2	1	24	5	0	49	0	0
Mean pond persistence probability	0	0	0.03	0.84	0.05	0.24	0.08	0.93	0.26	0	0.78	0	0.15
Connectivity to c4	0	0.08	0	-	0	0.44	0	0	0	0	0	0	0
Connectivity to c8	0	0	0	0	0	0.20	0.01	-	0.02	0	0	0	0
Connectivity to c11	0	0	0	0	0	0	0	0	0.03	0	-	0	0.06

third between cluster c8 and c9. The expectation is that connectivity between cluster c8 and c9/c7 will improve and enable establishment of populations in cluster c9.

*Scenario 3a:* The quality of cluster c9 and c11 is improved by establishing three, and then five, new high quality ponds within the range of the clusters (Figure 4B). The three new ponds in cluster c9 are expected to improve the probability of successful establishment of immigrants as well as reconnect c9 with c7. We expect an increase in abundance in cluster c11, and hence increased immigration to and colonisation of cluster c9.

*Scenario 3b:* In this modification of scenario 3a the quality of cluster c9 and c11 is still improved but with only one and two ponds, respectively. The remaining five ponds are used to create a dispersal corridor between cluster c11 and c9 (Figure 4C). This strategy is expected to enhance the abundance in cluster c11 and to improve connectivity to c9, thereby increasing the probability of colonisation.

## Mitigation analyses

### Scenario 2

Quite unexpectedly, the creation of drift fences and underpasses do not improve the condition of the landscape. The mean percentage of populated ponds is 26% and the percentage of ponds with persistence probability > 0.75 is 16% as in Scenario 1. However, the estimated regional abundance of female adults decreases to 115, landscape connectivity is 48 and dispersal survival rate 53% (Figure 5). As expected, connectivity between c8 and c9 is greatly improved. Cluster c9 now spans the road and has annexed one of the ponds in the periphery of c8 (Figure 4A). Abundance and mean pond persistence probability of cluster c9 increase; this, however, is due to the inclusion of a pond from cluster c8. Persistence and abundance do not improve on the original con-



**Table 6.** Results from analysis of mitigation measures. Scenario 2: Drift fences and underpasses; Scenario 3a: Implementing new ponds in clusters c9 and c11; Scenario 3b: Implementing new ponds as corridor between c9 and c11.

Cluster ID	Estimated cluster abundance			Mean pond persistence probability			Connectivity to c8			Connectivity to c11		
	S2*	S3a	S3b	S2*	S3a	S3b	S2*	S3a	S3b	S2	S3a	S3b
c4	40	48	49	0.82	0.82	0.82	0	0	0	0	0	0
c7	1	3	4	0.08	0.11	0.11	0.002 (0.004)	0	0	0	0	0
c8	17 (21)	23	23	0.90 (0.95)	0.90	0.92	-	-	-	0	0	0
c9	6 (2)	11	10	0.38 (0.27)	0.44	0.58	0.19 (0.29)	0.02	0.02	0.025	0.03	0.22
c11	40	50	61	0.74	0.80	0.85	0	0	0	-	-	-

\* In scenario 2 one pond originally belonging to c8 is annexed by c9. Entries in parentheses are values based on the original cluster configurations.

figuration of cluster c9 (Table 6). Apart from cluster c9, connectivity between initially populated clusters and other clusters does not improve. Connectivity to cluster c4 and c11 is unchanged, while connectivity to cluster c8 actually decreases. Finally, the abundance of frogs in cluster c4 and c11 decreases to 20% even though connectivity both within the cluster and to other clusters is unchanged.

**Scenario 3a**

Establishment of eight new ponds has a positive effect on landscape condition. The estimated number of adult females in the region increases to 143, percentage of populated ponds is 31% and 19% of the ponds are permanently populated. Landscape connectivity is 56 and dispersal survival rate 56% (Figure 5). The five new ponds in cluster c11 perform well and contain permanent populations. However, the performance of the cluster does not improve, apart from a slightly higher persistence probability (Table 6). Cluster c9 seems to benefit from the additional ponds, although none of the new ponds contain permanent populations. Cluster abundance and connectivity are nearly restored to their original conditions although mean pond persistence probability is still below 50%. Connectivity from cluster c7 to other ponds improves somewhat, but not enough to restore the cluster to its former performance (Figure 4B).

**Scenarios 3b**

With this strategy we succeed in restoring the landscape to its original ecological performance. The number of adult female frogs in the region is 159. Mean percentage of

populated ponds is 32% and 22% are populated permanently. Dispersal survival rate is 56% and landscape connectivity is 55 (Figure 5). Three of the new ponds are now part of cluster c9 while the remaining five new ponds belong to cluster c11. Connectivity between cluster c9 and c11 is strong and six of the new ponds contain permanent populations (Figure 4C). The abundance and mean persistence probability of cluster c11 increase and are now better than before the road construction. Conditions in cluster c9 also improve, compared to Scenario 1, but its original performance is not quite restored. The performance of cluster c7 does not change and is still at the same level as found in Scenario 1 (Table 6).

## Discussion

This study demonstrates how initial analyses of the landscape before and after the planned road constructions can help to identify which areas will be most affected by the construction. The analyses enable the user to recognise the colonisation potential of the clusters and to identify source or sink clusters and to use this knowledge for planning mitigation measures. In the present case study, the simulations indicated that the six populations recorded during the field survey will be largely unaffected by the road construction. Nevertheless, the road construction will severely impair the colonisation potential of cluster c8, thereby reducing the ecological performance of the landscape. Of the three mitigation strategies tested, the analysis showed that Scenario 3b is the best solution. This strategy of connecting clusters c9 and c11 restores the landscape to its former ecological performance. Even though not all individual ponds or clusters will be in the same condition as before, the strategy promotes viable populations on both sides of the road. The strategy is not strictly aimed at mitigating the impaired connectivity across the road, but rather tries to compensate for the effects of road construction by improving other areas. Still, the populations on either side of the road are not totally isolated from each other; some dispersal does take place making genetic exchange possible.

Comparing the results from the analyses of Scenarios 3a and 3b suggests that the location of compensating new ponds is not trivial. In both scenarios cluster c11 gets five new ponds, all of high quality. Nevertheless, the results differ quite a lot. Scenario 3a places the new ponds within the cluster sharing the summer habitat of other ponds. Even though the new ponds are colonized and support viable populations, the abundance of frogs within the cluster does not improve. In Scenario 3b, where the abundance of frogs within cluster c11 increases, the new ponds were placed between c9 and c11 and only partly share summer habitat with other ponds. This result emphasizes that for the Moor frog the carrying capacity of an area is not improved by adding new ponds, only new or better summer habitat can achieve this. Hence, we may improve cluster performance by creating new ponds in unutilized summer habitat within dispersal distance.

In Scenarios 3a and 3b, cluster c9 is also enlarged with three new ponds. In these cases there was no difference in frog abundance in the cluster whether the new ponds were placed in unused summer habitat or not. In both scenarios, though, mean pond persis-

tence probability greatly improved compared to Scenario 1. So, while adding ponds to a cluster did not improve carrying capacity, it ensured a more viable cluster population.

The analysis of Scenario 2 showed that drift fences and underpasses have negative effects on the ecological performance of this landscape. This result is highly surprising as well as controversial since fences and underpasses are standard mitigation measures used in many road projects (Luell et al. 2003). Even though fences and underpasses are supposed to prevent road mortality and promote connectivity, the overall annual survival rate, as well as connectivity, decreased. These effects are probably mostly due to the fences. Underpasses per se do not change movement patterns, but fences do. Moreover, we did see increased connectivity locally across the road between c8 and c9. Fences may force individuals to move along the road, exposing them to low quality habitat for a longer time. Furthermore, the mitigation measures may be counterproductive if the combination of fences and underpasses lead individuals into low quality habitat or areas without ponds to colonize. The population dynamics in the ponds is an emergent property, dependent on local conditions as well as regional dynamics. The change in connectivity and movement patterns caused by the mitigation measures, therefore, seems to be able to affect abundances even in clusters farther away.

Very little is known about the effects of mitigation measures on connectivity and local and regional population persistence. Once mitigation measures are implemented, efforts are seldom put into discovering how well they work. Recordings of animals using wild life passages reveal nothing about effects on local and regional persistence (Lesbarreres and Fahrig 2012; van der Grift et al. 2013). In a simulation study on a generic species, Jaeger and Fahrig (2004) found that fencing, while preventing road mortality, did not necessarily improve population persistence and they recommended fencing only when road mortality is 100 %. In a study on moose (*Alces alces*), Olsson and Widen (2008) found that fences resulted in decreased use of wildlife passages. Our simulation results underscore the need for a better understanding of how mitigation measures affect animal behaviour and population dynamics.

## **Conclusion**

When planning road constructions, it is important to integrate mitigation measures right from the start. Often there are economic constraints on which measures are possible, certain structures as viaducts or bridges may already be in place or land available for compensation measures is restricted. SAIA offers a tool to evaluate different scenarios to find the best combination of mitigation measures for a given set of conditions. The model is meant to be used by non-specialists – all that is needed are GIS maps of the different scenarios. We attempted to find a balance between detailed and yet intuitive and easy interpretable output. Even though SAIA was developed for the Danish Road Directorate, its use is not restricted to road constructions but can be applied to other structures affecting the landscape and their potential impacts on wildlife.

## Acknowledgments

The work was funded by the Danish Road Directorate. We thank Amphi Consult for providing us with amphibian expertise and field data. We are grateful for continuous and enthusiastic feed-back from M. Ujvári, M. Hesselsøe, A. Jørgensen and M. Schneckloth during model development. Special thanks are due to Uta Berger for encouraging and inspiring discussions. We thank Michal J. Reed for linguistic assistance. We also wish to thank two anonymous reviewers for insightful comments.

## References

- Adriaensen F, Chardon JP, De Blust G, Swinnen E, Villalba S, Gulinck H, Matthysen E (2003) The application of 'least-cost' modelling as a functional landscape model. *Landscape and urban planning* 64: 233–247. doi: 10.1016/s0169-2046(02)00242-6
- Baker JMR, Halliday TR (1999) Amphibian colonization of new ponds in an agricultural landscape. *Herpetological Journal* 9: 55–63
- Beckmann JP (2010) Safe passages, highways, wildlife, and habitat connectivity. Washington.
- Brown JW (2006) Eco-logical: An Ecosystem Approach to Developing Infrastructure Projects. Federal Highway Administration, Washington, DC 20590, FHWA-HEP-06-011
- Bunn AG, Urban DL, Keitt TH (2000) Landscape connectivity: A conservation application of graph theory. *Journal of environmental management* 59: 265–278. doi: 10.1006/jema.2000.0373
- Calabrese JM, Fagan WF (2004) A comparison-shopper's guide to connectivity metrics. *Frontiers in Ecology and the Environment* 2: 529–536. doi: 10.1890/1540-9295(2004)002[0529:acgtcm]2.0.co;2
- Cappelen J (Ed) (2009) DMI Daily Climate Data Collection 1873–2008, Denmark, The Faroe Islands and Greenland - including Air Pressure Observations 1874–2008 (WASA Data Sets). Danish Meteorological Institute, Copenhagen.
- Coffin AW (2007) From roadkill to road ecology: A review of the ecological effects of roads. *Journal of Transport Geography* 15: 396–406. doi: 10.1016/j.jtrangeo.2006.11.006
- Dunning JB, Danielson BJ, Pulliam HR (1992) Ecological processes that affect populations in complex landscapes. *Oikos* 65: 169–175. doi: 10.2307/3544901
- Elmberg J (2008) Ecology and natural history of the moor frog (*Rana arvalis*) in boreal Sweden. In: Glandt D, Jehle R (Eds) *The Moor Frog* Laurenti-Verlag, Bielefeld, 179–194.
- Epps CW, Wehausen JD, Bleich VC, Torres SG, Brashares JS (2007) Optimizing dispersal and corridor models using landscape genetics. *Journal of Applied Ecology* 44: 714–724. doi: 10.1111/j.1365-2664.2007.01325.x
- Fahrig L, Rytwinski T (2009) Effects of Roads on Animal Abundance: an Empirical Review and Synthesis. *Ecology and Society* 14: 21
- Fog K, Hesselsøe M (2009) Udvikling af prototypemodel til brug for forvaltning af spidssnudet frø i forbindelse med vejanlæg. Amphi Consult.

- Forman RTT, Alexander LE (1998) Roads and their major ecological effects. *Annual Review of Ecology and Systematics* 29: 207–231. doi: 10.1146/annurev.ecolsys.29.1.207
- Forman RTT, Sperling D, Bissonette JA, Clevenger AP, Cutshall CD, Dale VH, Fahrig L, France R, Goldman CR, Heanue K, Jones JA, Swanson FJ, Turrentine T, Winter TC (2003) Road ecology: science and solutions. Chp. 6. Mitigation for Wildlife. Island Press, Washington-Covelo-London.
- Glandt D (2008) Der Moorfrosch (*Rana arvalis*): Erscheinungsvielfalt, Verbreitung, Lebensräume, Verhalten sowie Perspektiven für den Artenschutz. In: Glandt D, Jehle R (Eds) The Moor Frog. Laurenti-Verlag, Bielefeld.
- Gontier M, Mörtberg U, Balfors B (2010) Comparing GIS-based habitat models for applications in EIA and SEA. *Environmental Impact Assessment Review* 30: 8–18. doi: 10.1016/j.eiar.2009.05.003
- Graf RF, Kramer-Schadt S, Fernandez N, Grimm V (2007) What you see is where you go? Modeling dispersal in mountainous landscapes. *Landscape Ecology* 22: 853–866. doi: 10.1007/s10980-006-9073-3
- Grimm V (1999) Ten years of individual-based modelling in ecology: what have we learned and what could we learn in the future? *Ecological Modelling* 115: 129–148. doi: 10.1016/S0304-3800(98)00188-4
- Grimm V, Railsback SF (2005) Individual-based Modeling and Ecology. Princeton University Press.
- Grimm V, Berger U, Bastiansen F, Eliassen S, Ginot V, Giske J, Goss-Custard J, Grand T, Heinz SK, Huse G, Huth A, Jepsen JU, Jorgensen C, Mooij WM, Muller B, Pe'er G, Piau C, Railsback SF, Robbins AM, Robbins MM, Rossmanith E, Ruger N, Strand E, Souissi S, Stillman RA, Vabo R, Visser U, DeAngelis DL (2006) A standard protocol for describing individual-based and agent-based models. *Ecological Modelling* 198: 115–126. doi: 10.1016/j.ecolmodel.2006.04.023
- Grimm V, Berger U, DeAngelis DL, Polhill JG, Giske J, Railsback SF (2010) The ODD protocol: A review and first update. *Ecological Modelling* 221: 2760–2768. doi: 10.1016/j.ecolmodel.2010.08.019
- Hartung H (1991) Untersuchung zur terrestrischen Biologie von Populationen des Moorfrosches (*Rana arvalis* NILSSON 1842) unter besonderer Berücksichtigung der Jahresmobilität. Universität Hamburg, Hamburg.
- Hassingboe J, Neergaard RS, Hesselsøe M (2012) Manual til produktion af GIS raster kort til: ”EDB-værktøj til at vurdere skader på bestande af padder /økologisk funktionalitet”. Amphi Consult.
- Hels T, Nachman G (2002) Simulating viability of a spadefoot toad *Pelobates fuscus* metapopulation in a landscape fragmented by a road. *Ecography* 25: 730–744. doi: 10.1034/j.1600-0587.2002.250609.x
- Holderegger R, Di Giulio M (2010) The genetic effects of roads: A review of empirical evidence. *Basic and Applied Ecology* 11: 522–531. doi: 10.1016/j.baae.2010.06.006
- Iuell B, Bekker GJ, Cuperus R, Dufek J, Fry G, Hicks C, Hlaváč V, Keller V, Rossel C, Sangwine T, Tørsløv N, le Maire Wandall B (Eds) (2003) Wildlife and Traffic: A European

- Handbook for Identifying Conflicts and Designing Solutions. Office for official publications of the European Communities, Luxembourg.
- Jaeger JaG, Fahrig L (2004) Effects of Road Fencing on Population Persistence. *Conservation Biology* 18: 1651–1657. doi: 10.1111/j.1523-1739.2004.00304.x
- Kovar R, Brabec M, Vita R, Bocek R (2009) Spring migration distances of some Central European amphibian species. *Amphibia-reptilia* 30: 367–378. doi: 10.1163/156853809788795236
- Kramer-Schadt S, Revilla E, Wiegand T, Breitenmoser U (2004) Fragmented landscapes, road mortality and patch connectivity: modelling influences on the dispersal of Eurasian lynx. *Journal of Applied Ecology* 41: 711–723. doi: 10.1111/j.0021-8901.2004.00933.x
- Latombe G, Parrott L, Fortin D (2011) Levels of emergence in individual based models: Coping with scarcity of data and pattern redundancy. *Ecological Modelling* 222: 1557–1568. doi: 10.1016/j.ecolmodel.2011.02.020
- Legendre P, Legendre L (1998) *Numerical ecology*. Elsevier.
- Lesbarreres D, Fahrig L (2012) Measures to reduce population fragmentation by roads: what has worked and how do we know? *Trends in Ecology & Evolution* 27: 374–380. doi: 10.1016/j.tree.2012.01.015
- Loman J (1994) Site tenacity, within and between summers, of *Rana arvalis* and *Rana temporaria*. *Alytes* 12: 15–29.
- McLane AJ, Semeniuk C, McDermid GJ, Marceau DJ (2011) The role of agent-based models in wildlife ecology and management. *Ecological Modelling* 222: 1544–1556. doi: 10.1016/j.ecolmodel.2011.01.020
- Minor ES, Urban DL (2008) A graph-theory framework for evaluating landscape connectivity and conservation planning. *Conservation Biology* 22: 297–307. doi: 10.1111/j.1523-1739.2007.00871.x
- Olsson MPO, Widen P (2008) Effects of highway fencing and wildlife crossings on moose *Alces alces* movements and space use in southwestern Sweden. *Wildlife Biology* 14: 111–117. doi: 10.2981/0909-6396(2008)14[111:eohfaw]2.0.co;2
- Pe'er G, Henle K, Dislich C, Frank K (2011) Breaking Functional Connectivity into Components: A Novel Approach Using an Individual-Based Model, and First Outcomes. *PLoS ONE* 6(8): e22355. doi: 10.1371/journal.pone.0022355
- Pontoppidan M-B, Nachman G (2013) Changes in behavioural responses to infrastructure affect local and regional connectivity – a simulation study on pond breeding amphibians. *Nature Conservation* 5: 13–28. doi: 10.3897/natureconservation.5.4611
- Pope SE, Fahrig L, Merriam NG (2000) Landscape complementation and metapopulation effects on leopard frog populations. *Ecology* 81: 2498–2508. doi: 10.1890/0012-9658(2000)081[2498:LCAMEO]2.0.CO;2
- Semlitsch RD (2008) Differentiating migration and dispersal processes for pond-breeding amphibians. *Journal of Wildlife Management* 72: 260–267. doi: 10.2193/2007-082
- Sinsch U (1990) Migration and orientation in anuran amphibians. *Ethology Ecology & Evolution* 2: 65–79. doi: 10.1080/08927014.1990.9525494
- Sinsch U (2006) Orientation and navigation in Amphibia. *Marine and Freshwater Behaviour and Physiology* 39: 65–71. doi: 10.1080/10236240600562794

- Sjögren-Gulve P (1998) Spatial movement patterns in frogs: Differences between three *Rana* species. *Ecoscience* 5: 148–155.
- Spellerberg IF (1998) Ecological effects of roads and traffic: a literature review. *Global Ecology and Biogeography* 7: 317–333. doi: 10.1046/j.1466-822x.1998.00308.x
- Taylor PD, Fahrig L, Henein K, Merriam G (1993) Connectivity is a vital element of landscape structure. *Oikos* 68: 571–573. doi: 10.2307/3544927
- Trocmé M, Cahill S, de Vries JG, Farrall H, Folkesson LG, Hichks C, Peymen J (Eds) (2003) COST 341 – Habitat Fragmentation due to Transportation Infrastructure. Office for Official Publications of the European Communities, Luxembourg.
- Trombulak SC, Frissell CA (2000) Review of ecological effects of roads on terrestrial and aquatic communities. *Conservation Biology* 14: 18–30. doi: 10.1046/j.1523-1739.2000.99084.x
- van der Grift EA, van der Ree R, Fahrig L, Findlay S, Houlahan J, Jaeger JAG, Klar N, Madriñan LF, Olson L (2013) Evaluating the effectiveness of road mitigation measures. *Biodiversity and Conservation* 22: 425–448. doi: 10.1007/s10531-012-0421-0
- Vos CC, Chardon JP (1998) Effects of habitat fragmentation and road density on the distribution pattern of the moor frog *Rana arvalis*. *Journal of Applied Ecology* 35: 44–56. doi: 10.1046/j.1365-2664.1998.00284.x
- Watts K, Handley P (2010) Developing a functional connectivity indicator to detect change in fragmented landscapes. *Ecological Indicators* 10: 552–557. doi: 10.1016/j.ecolind.2009.07.009
- Wiens JA (1997) Metapopulation Dynamics and Landscape Ecology. In: Hanski I, Gilpin ME (Eds) *Metapopulation Biology: ecology, genetics, and evolution*. Academic press, Inc.,
- Wilensky U (1999) NetLogo. Center for Connected Learning and Computer-Based Modeling, Northwestern University, Evanston, IL. <http://ccl.northwestern.edu/netlogo>
- Zetterberg A, Mortberg UM, Balfors B (2010) Making graph theory operational for landscape ecological assessments, planning, and design. *Landscape and urban planning* 95: 181–191. doi: 10.1016/j.landurbplan.2010.01.002

## Appendix

Full model description following the protocol suggested by Grimm et al. (2006, 2010) and model parameterisation. (doi: [10.3897/natureconservation.5.4612.app](https://doi.org/10.3897/natureconservation.5.4612.app)). File format: Adobe PDF document (pdf).

**Copyright notice:** This dataset is made available under the Open Database License (<http://opendatacommons.org/licenses/odbl/1.0/>). The Open Database License (ODbL) is a license agreement intended to allow users to freely share, modify, and use this Dataset while maintaining this same freedom for others, provided that the original source and author(s) are credited.

---

**Citation:** Pontoppidan M-B, Nachman G (2013) Spatial Amphibian Impact Assessment – a management tool for assessment of road effects on regional populations of Moor frogs (*Rana arvalis*). *Nature Conservation* 5: 29–52. doi: [10.3897/natureconservation.5.4612.app](https://doi.org/10.3897/natureconservation.5.4612.app)

---